

ST MICHAEL'S PLAYERS PRESENT



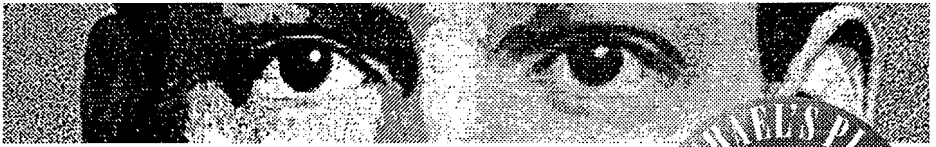
The Real Inspector Hound



A ONE ACT PLAY BY TOM STOPPARD



**at ST MICHAEL'S CENTRE
ELMWOOD ROAD · CHISWICK · W4**



Programme £1



50th ANNIVERSARY YEAR PROGRAMME



Monday, 5 July	<i>AGM and Members' Meeting</i>
Saturday, 10 July	50th Anniversary Review
August	Summer Barbecue Casting for "The Odd Couple"
Friday, 3 September	and every Friday/Monday - rehearsals for "The Odd Couple"
Wed-Sat, 27-30 October	"The Odd Couple"
November	Rehearsed Reading
December	Pantomime Film of the Year <i>General Meeting - Year 2000 Plans</i>



Membership Application Form

Please complete and return to:

Ruth Reid,

Membership Secretary,

76 Wavendon Avenue,

Chiswick, London, W4 4NS

I would like to join St Michael's Players and enclose a cheque for £15 (payable to St Michael's Players) for my 1999 annual subscription.

Under 18's are welcomed as free members.

Name: _____

Address: _____

Post Code: _____

Telephone: _____

Alternatively, you can ring Ruth on 0181 994 5296 and ask for membership details.

A LOT MORE BUMS ON SEATS

The first production in our 50th year was a great success contributing vastly to our bank balance and involving several new members. Phil Lye is to be congratulated on a most imaginative production which enabled a wide range of talents to perform to the best of their ability. In fact, with a cast of eighteen and another dozen people providing off-stage assistance, "Bums on Seats" was a genuine ensemble production.

"THE REAL INSPECTOR HOUND"

Only really close readers of The Players newsletters and programmes will have spotted that "The Real Inspector Hound" has been postponed to its current dates. As this is our 50th Anniversary Year, we decided to mount at least one extra production based on the assumption that we would recruit new members. Following an ad in The Stage, we were able to cast "The real Inspector Hound" with five of the eight protagonists being new members. However, as rehearsals progressed, Fran Fox, Director, became increasingly worried that the production would not be up to standard. So, one month ago we bid two of the new members farewell, postponed the performance dates and re-cast three of the eight parts. This still leaves three new members in this production whom we warmly welcome.

The Real Inspector Hound, although only one act long is an ambitious play to do with its quick fire dialogue from the pen of the master - Tom Stoppard. We hope that he and you will not be displeased with our efforts.

The play revolves around Moon and Birdboot, two theatre critics, who arrive to watch a performance of a new detective play, a parody of the conventional stage thriller. However, the private lives of the critics become inter-twined with those of the play's characters with a surprising and hysterical outcome to reveal who actually proves to be The Real Inspector Hound.

The Play was first presented at the Criterion Theatre, London on June 17th, 1968 with the following cast of characters:

MOON	RICHARD BRIERS
BIRDBOOT	RONNIE BARKER
MRS DRUDGE	JOSEPHINE TEWSON
SIMON	ROBIN ELLIS
FELICITY	PATRICIA SHAKESBY
CYNTHIA	CAROLINE BLAKISTON
MAGNUS	ANTHONY WEBB
INSPECTOR HOUND	HUGH WALTERS

The action of the play passes on the stage of a theatre, set for the performance of a play, and part of the auditorium. The time is the present.

ST MICHAEL'S P



The Real Insp A ONE ACT PLAY B

THE CAST

Moon	Theatre Critic	ANDY MOSELEY
Birdboot	Theatre Critic	MERVYN JUPE
Mrs Drudge	Housekeeper	SARAH SALHOLM
Simon Gascoyne	Handsome Stranger	PHILIP LYE
Felicity	Sweet Young Thing	KATHY DAVEY
Cynthia	Lady Muldoon	JANE ATKINSON
Magnus	Lord Muldoon's brother	MIKE ROBINSON
Inspector Hound	Policeman	GEORGE ATKINSON

LAYERS PRESENT



Director Hound BY TOM STOPPARD

THE COMPANY

Director.....FRAN FOX

Producer.....MICHAEL ROBINSON

Stage Manager.....LARA DEACON

Lighting.....FRANCES PRICE
CHRIS HULATT

Set Construction.....PHIL LYE & OTHERS

Props.....LARA DEACON

Costumes.....THE PLAYERS

Make-up.....THE PLAYERS

Prompt.....JUDITH EVANS

Poster and Brochure Design.....ROGER PRING

Programme Production.....ATKINSON ASSOCIATES

Business Manager.....MICHAEL ROBINSON

Front of House.....BEATRICE PACKARD



PRODUCTIONS FROM 1949 TO 1999

To celebrate fifty fabulous years, it seems appropriate that we should show our audience and supporters a complete list of the productions that we have performed since the first one in the Spring of 1949, although a founder member says they actually began with an entertainment at Christmas 1948, commissioned and directed by the Vicar of the time, Revd Samuel Manning!

	Spring	Autumn
1949	Painted Sparrows	The Blue Goose
1950	Acacia Avenue	A Play for Ronnie
1951	The Ghost Train	Lovely to Look at
1952	The Happiest days of Your Life	Crystal Clear
1953	Laburnum Grove	Count Your Blessings
1954	The Holly and the Ivy	Red Letter Day
1955	Fools Rush In	The Paragon
1956	The Light of Heart	Blithe Spirit
1957	Night Must Fall	Family Affairs
1958	A Question of Fact	
1959	The Reluctant Debutante	Wild Goose Chase
1960	The Heiress	Sailor Beware
	Revue: April Showers	
1961	Anastasia	See How They Run
1962	The Shop at Sly Corner	My Three Angels
1963	Waters of the Moon	Dry Rot
1964	The Gazebo	And This was Odd
1965	A Shred of Evidence	Breath of Spring
1966	Farewell Farewell Eugene	Your Obedient Servant
1967	Dr Jo	Fools Paradise
1968	A Letter from the General	The Amorous Goldfish
1969	The Breadwinner	The Reluctant Peer
1970	All for Mary	George and Margaret
1971	Brief Suspicion	A Likely Tale
1972	Gaslight	The Bride and the Batchelor

	Spring	Autumn
1973	Book of the Month	She Passed through Lorraine
1974	The Brides of March	Maria Marten
1975	The Corn is Green	Suddenly at Home
1976	The Waltz of the Toreadors	Pools Paradise
1977	Ladies in Retirement	Semi-Detached
1978	The Day after the Fair	Bonaventure
1979	Lady Audley's Secrets	Something to Hide
1980	Goodnight Mrs Puffin	An Inspector Calls
1981	A Resounding Tinkle/ Black Comedy	Dandy Dick
1982	Fallen Angels	The Chalk Garden
1983	A Murder is Announced	Every Other Evening
1984	The Browning Version/ Hands Across the Sea	The Man Who Came to Dinner
1985	Table Manners	Whose Life is it Anyway?
1986	Habeas Corpus	Separate Tables
1987	See How they Run	Living Together
1988	Night Watch	The Magistrate
1989	On Monday Next	Quartermaine's Terms
1990	Man of Destiny/Face the Music	Alphabetical Order
1991	Mixed Doubles	Present Laughter
1992		Rough Crossing
1993	Round and Round the Garden	Deep Blue Sea
1994	Steel Magnolias	Love Affair
	Summer	
1995	Still Life	Before Dawn
1996	Harlequinade	Pack of Lies

***1996 Easter to Spring 1997 no performances while
St Michael's Centre was under construction!***

1997	Move Over Mrs Markham	The Potting Shed
1998	Hay Fever	Frankenstein
1999	Bums on Seats	



Coyote Cafe

No. 2 Fauconberg Road
Chiswick, London W4 3JY
Tel: 0181 742 8545
Fax: 0181 742 8498